

INDEX OF SHEETS

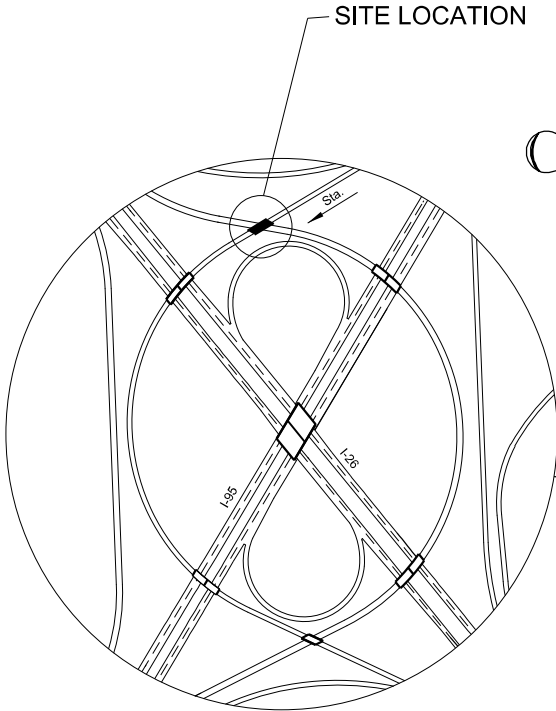
1. Title Sheet
2. Bridge Plan & Profile
3. Superstructure -Typical Section



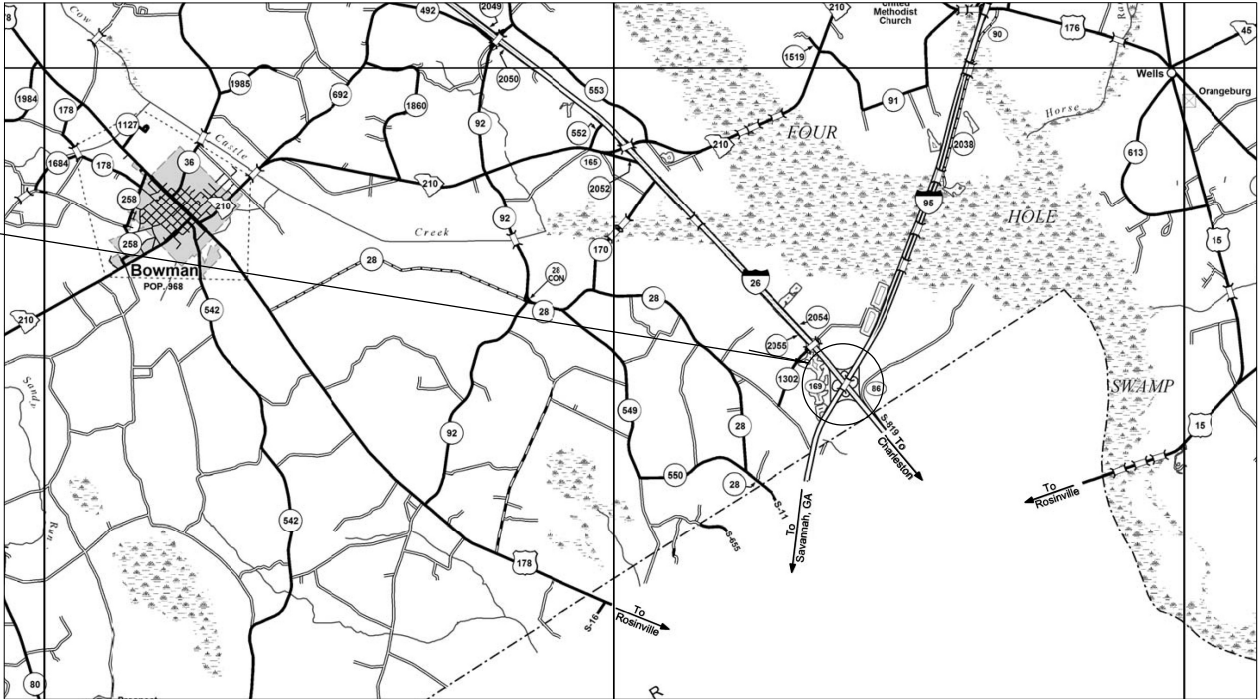
South Carolina Department of Transportation



CONCEPTUAL PLANS
FOR
ORANGEBURG COUNTY
PROJECT ID P038677
I-26/I-95 INTERCHANGE IMPROVEMENT
CONSTRUCT OVERPASS OVER RAMP GCO2-1
ALONG RAMP FCH2



SITE LOCATION



LAYOUT



Approximate Location of Bridge is
Latitude 33°-19'-17.8" N
Longitude 80°-32'-55.0" N

3 DAYS BEFORE DIGGING IN
SOUTH CAROLINA
CALL 811
SOUTH CAROLINA 811 (SC811)
WWW.SC811.COM
ALL UTILITIES MAY NOT BE A MEMBER OF SC811

ASSET ID TBD

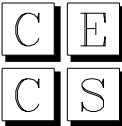
TRAFFIC DATA

ADT V.P.D.
ADT V.P.D.
TRUCKS %

NET LENGTH OF ROADWAY	0.000	MILES
NET LENGTH OF BRIDGES	0.021	MILES
NET LENGTH OF PROJECT	0.021	MILES
LENGTH OF EXCEPTIONS	0.000	MILES
GROSS LENGTH OF PROJECT	0.021	MILES

NOTE: EXCEPT AS MAY OTHERWISE BE SPECIFIED ON THE PLANS OR IN THE SPECIAL PROVISIONS, ALL MATERIALS AND WORKMANSHIP ON THIS PROJECT SHALL CONFORM TO THE SOUTH CAROLINA DEPARTMENT OF TRANSPORTATION STANDARD SPECIFICATIONS FOR HIGHWAY CONSTRUCTION (2007 EDITION) AND THE STANDARD DRAWINGS FOR ROAD CONSTRUCTION IN EFFECT AT THE TIME OF LETTING.

CONSULTING ENGINEERING FIRM



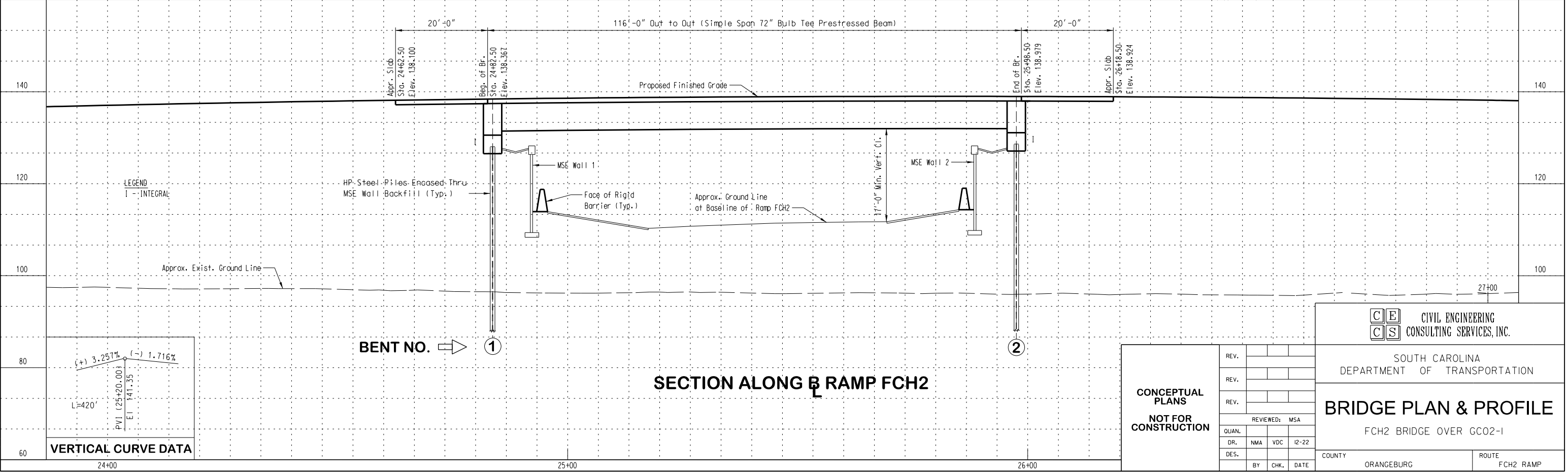
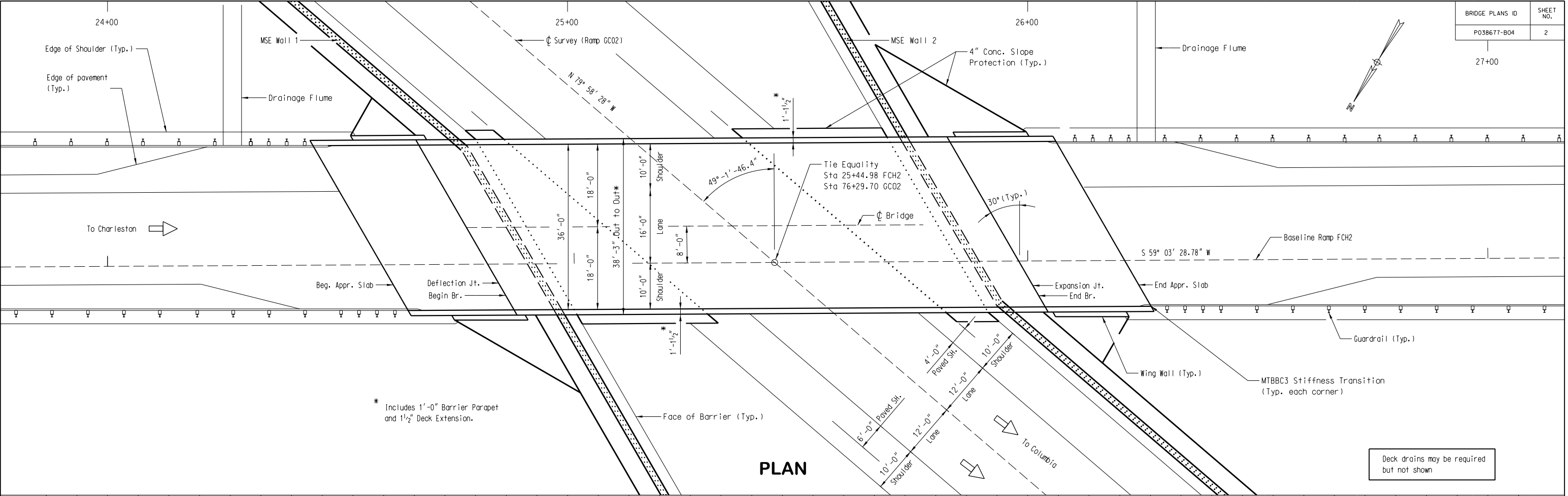
CIVIL ENGINEERING
CONSULTING SERVICES, INC.

2000 PARK STREET
SUITE 201
COLUMBIA, S.C. 29201

ENGINEER OF RECORD

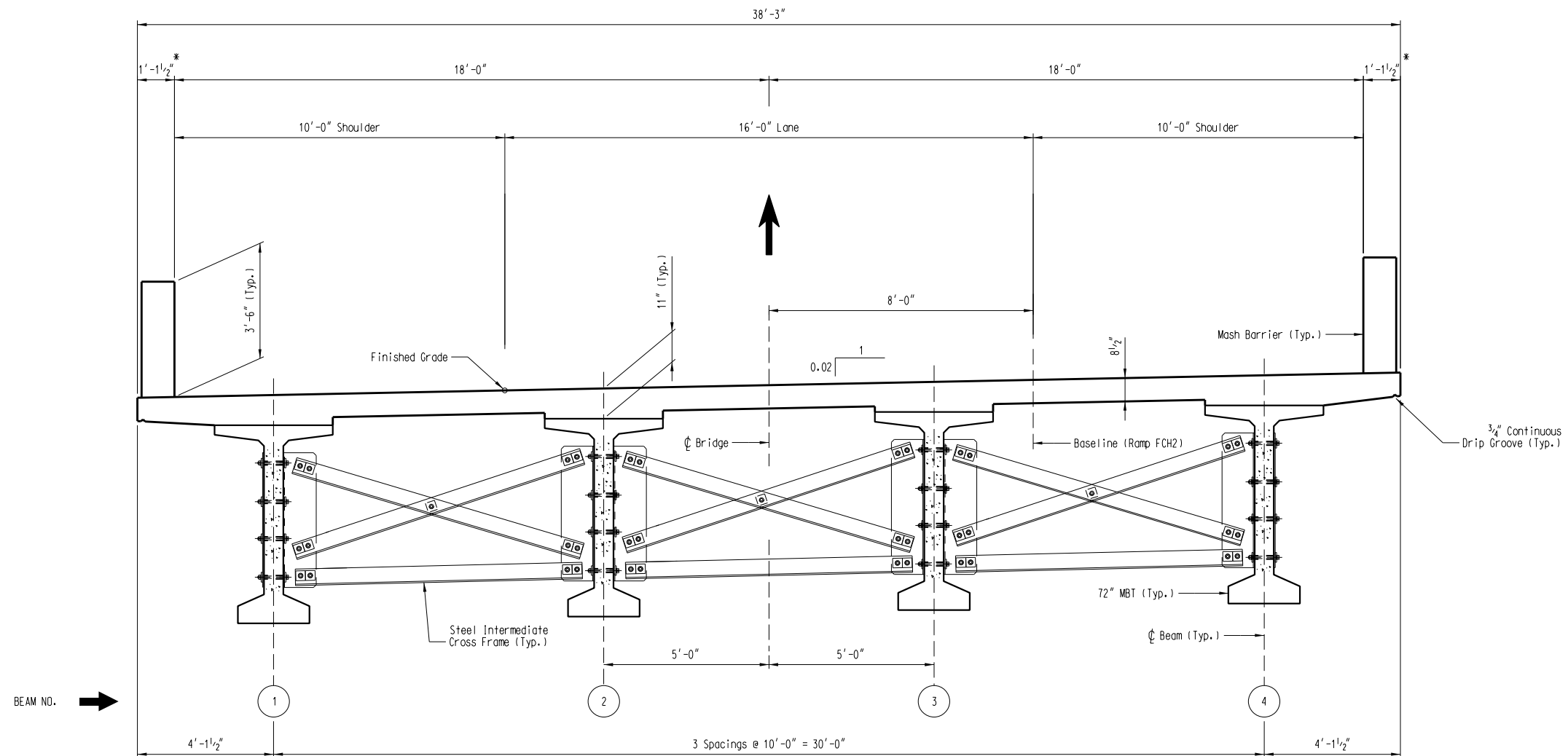
CONCEPTUAL PLANS
NOT FOR CONSTRUCTION

FOR CONSTRUCTION : DATE



BRIDGE PLANS ID	SHEET NO.
P038677-B04	3

* Includes 1'-0" MASH Barrier and 1½" Deck Extension



SECTION THRU SUPERSTRUCTURE

(Looking in Direction of Stationing)

Note: Deck drains not shown

CONCEPTUAL PLANS NOT FOR CONSTRUCTION	REV.				SOUTH CAROLINA DEPARTMENT OF TRANSPORTATION	
	REV.				SUPERSTRUCTURE TYPICAL SECTION FCH2 BRIDGE OVER GC02-1	
	REV.					
	REVIEWED MSA					
	QUAN.					
	DR.	NMA	VDC	I2-22		
	DES.				COUNTY	ROUTE
	BY	CHK.	DATE		ORANGEBURG	FCH2 Ramp

DRAWING NO.